

# Confined Space Inventory for Saint Cloud Public Schools



**Inspector:** Rachel Koehler

**Inspection Date:** 1/26/2007

**Building:** Apollo High School

**Location:** Storage Room A325

**Type of Space:** Tunnel

**Space Classification:** Non-Permit

**Potential Hazards:**

*No Hazards*

**Number of Entries into Space:** 1

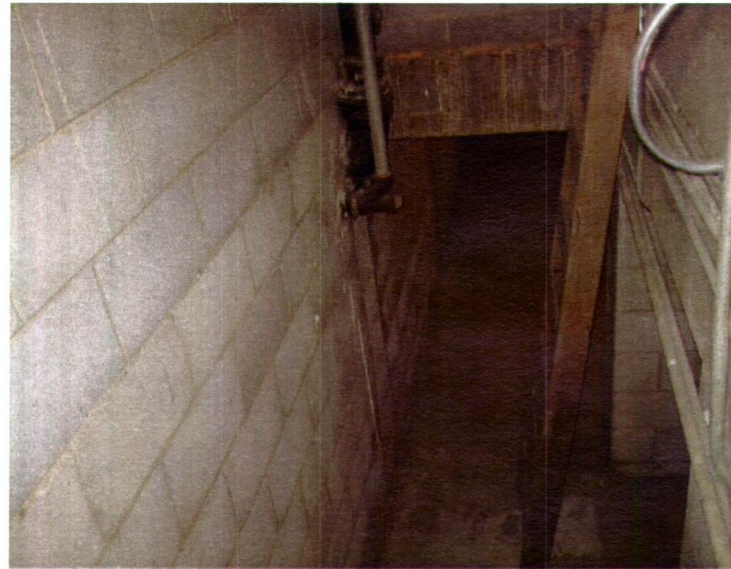
**Other Considerations:**

*City sewer or water*

*Electrical*

*Poor lighting*

**Comments:** Tunnel travels the perimeter of the gymnasium.



**Photo Date:** 1/26/2007

**Photo Description**

Tunnel access in Storage Room A325.

# Confined Space Inventory for Saint Cloud Public Schools



**Inspector:** Rachel Koehler

**Inspection Date:** 1/26/2007

**Building:** *Apollo High School*

**Location:** *Pool Office*

**Type of Space:** *Tunnel*

**Space Classification:** *Non-Permit*

**Potential Hazards:**

*No Hazards*

**Number of Entries into Space:** *2*

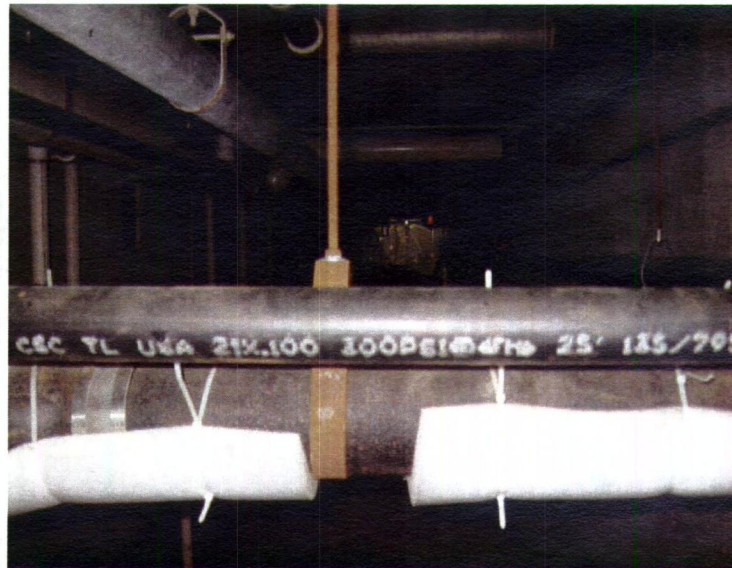
**Other Considerations:**

*City sewer or water*

*Electrical*

*Poor lighting*

**Comments:** *Tunnel travels around pool.*



**Photo Date:** 1/26/2007

**Photo Description**

Tunnel access off Pool Office.



# Confined Space Inventory for Saint Cloud Public Schools



**Inspector:** Rachel Koehler

**Inspection Date:** 1/26/2007

**Building:** Apollo High School

**Location:** Pool Tunnel

**Type of Space:** Sump

**Space Classification:** Permit

**Potential Hazards:**

*Potential for oxygen deficiency*

*Engulfment*

**Number of Entries into Space:** 1

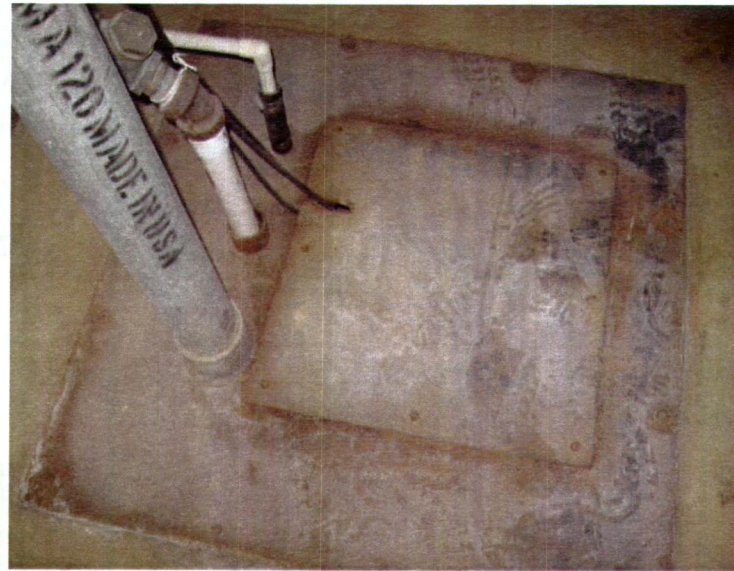
**Other Considerations:**

*Biological*

*City sewer or water*

*Slick/wet surfaces*

**Comments:** Lockout/Tagout procedures for pumps are required prior to entry.



**Photo Date:** 1/26/2007

**Photo Description**

Sump

# Confined Space Inventory for Saint Cloud Public Schools



**Inspector:** Rachel Koehler

**Inspection Date:** 1/26/2007

**Building:** Apollo High School

**Location:** Tunnel running from A Building to C Building

**Type of Space:** Sump ( 3 )

**Space Classification:** Permit

**Potential Hazards:**

*Potential for oxygen deficiency*

*Engulfment*

**Number of Entries into Space:** 1

**Other Considerations:**

*Biological*

*City sewer or water*

*Slick/wet surfaces*

**Comments:** Lockout/Tagout procedures for pumps are required prior to entry.



**Photo Date:** 1/26/2007

**Photo Description**

Sump



# Confined Space Inventory for Saint Cloud Public Schools



**Inspector:** Rachel Koehler

**Inspection Date:** 1/26/2007

**Building:** *Apollo High School*

**Location:** *Exterior Building Courtyard*

**Type of Space:** *Storm sewer*

**Space Classification:** *Permit*

**Potential Hazards:**

*Potential for oxygen deficiency*

*Engulfment*

*Configuration*

**Number of Entries into Space:** *1*

**Other Considerations:**

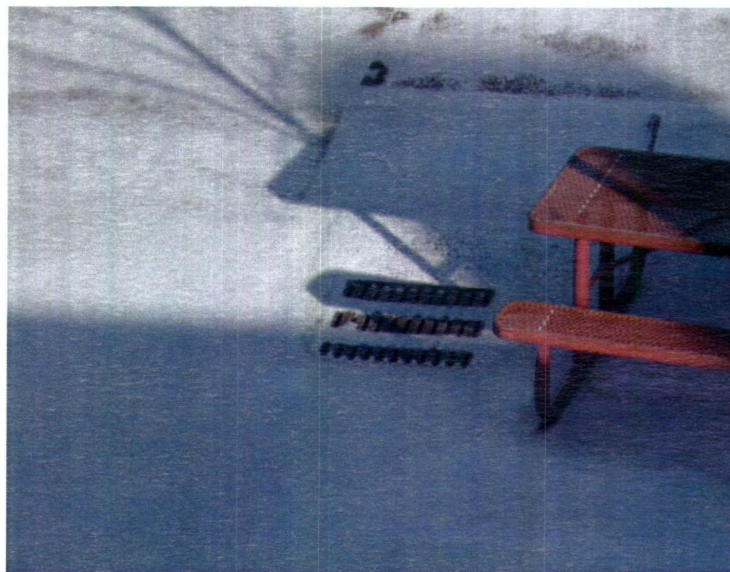
*City sewer or water*

*Fall hazards*

*Poor lighting*

*Slick/wet surfaces*

**Comments:** *None*



**Photo Date:** 1/26/2007

**Photo Description**

Storm Sewer

# Confined Space Inventory for Saint Cloud Public Schools



**Inspector:** Rachel Koehler

**Inspection Date:** 1/26/2007

**Building:** Apollo High School

**Location:** Exterior Building North side

**Type of Space:** Manhole ( 2 )

**Space Classification:** Permit

**Potential Hazards:**

*Potential for oxygen deficiency*

*Engulfment*

*Configuration*

**Number of Entries into Space:** 1

**Other Considerations:**

*City sewer or water*

*Fall hazards*

*Poor lighting*

*Slick/wet surfaces*

**Comments:** None



**Photo Date:** 1/26/2007

**Photo Description**

Manhole



# Confined Space Inventory for Saint Cloud Public Schools



**Inspector:** Rachel Koehler

**Inspection Date:** 1/26/2007

**Building:** Apollo High School

**Location:** Exterior Building East side

**Type of Space:** Storm sewer ( 2 )

**Space Classification:** Permit

**Potential Hazards:**

*Potential for oxygen deficiency*

*Engulfment*

*Configuration*

**Number of Entries into Space:** 1

**Other Considerations:**

*City sewer or water*

*Fall hazards*

*Poor lighting*

*Slick/wet surfaces*

**Comments:** None



**Photo Date:** 1/26/2007

**Photo Description**

Storm Sewer

# Confined Space Inventory for Saint Cloud Public Schools



**Inspector:** Rachel Koehler

**Inspection Date:** 1/26/2007

**Building:** *Apollo High School*

**Location:** *Exterior Building East side*

**Type of Space:** *Manhole*

**Space Classification:** *Permit*

**Potential Hazards:**

*Potential for oxygen deficiency*

*Engulfment*

*Configuration*

**Number of Entries into Space:** *1*

**Other Considerations:**

*City sewer or water*

*Fall hazards*

*Poor lighting*

*Slick/wet surfaces*

**Comments:** *None*



**Photo Date:** 1/26/2007

**Photo Description**

Manhole



# Confined Space Inventory for Saint Cloud Public Schools



**Inspector:** Rachel Koehler

**Inspection Date:** 1/26/2007

**Building:** *Apollo High School*

**Location:** *Exterior Building South side*

**Type of Space:** *Manhole ( 2 )*

**Space Classification:** *Permit*

**Potential Hazards:**

*Potential for oxygen deficiency*

*Engulfment*

*Configuration*

**Number of Entries into Space:** *1*

**Other Considerations:**

*City sewer or water*

*Fall hazards*

*Poor lighting*

*Slick/wet surfaces*

**Comments:** *None*



**Photo Date:** 1/26/2007

**Photo Description**

Manhole